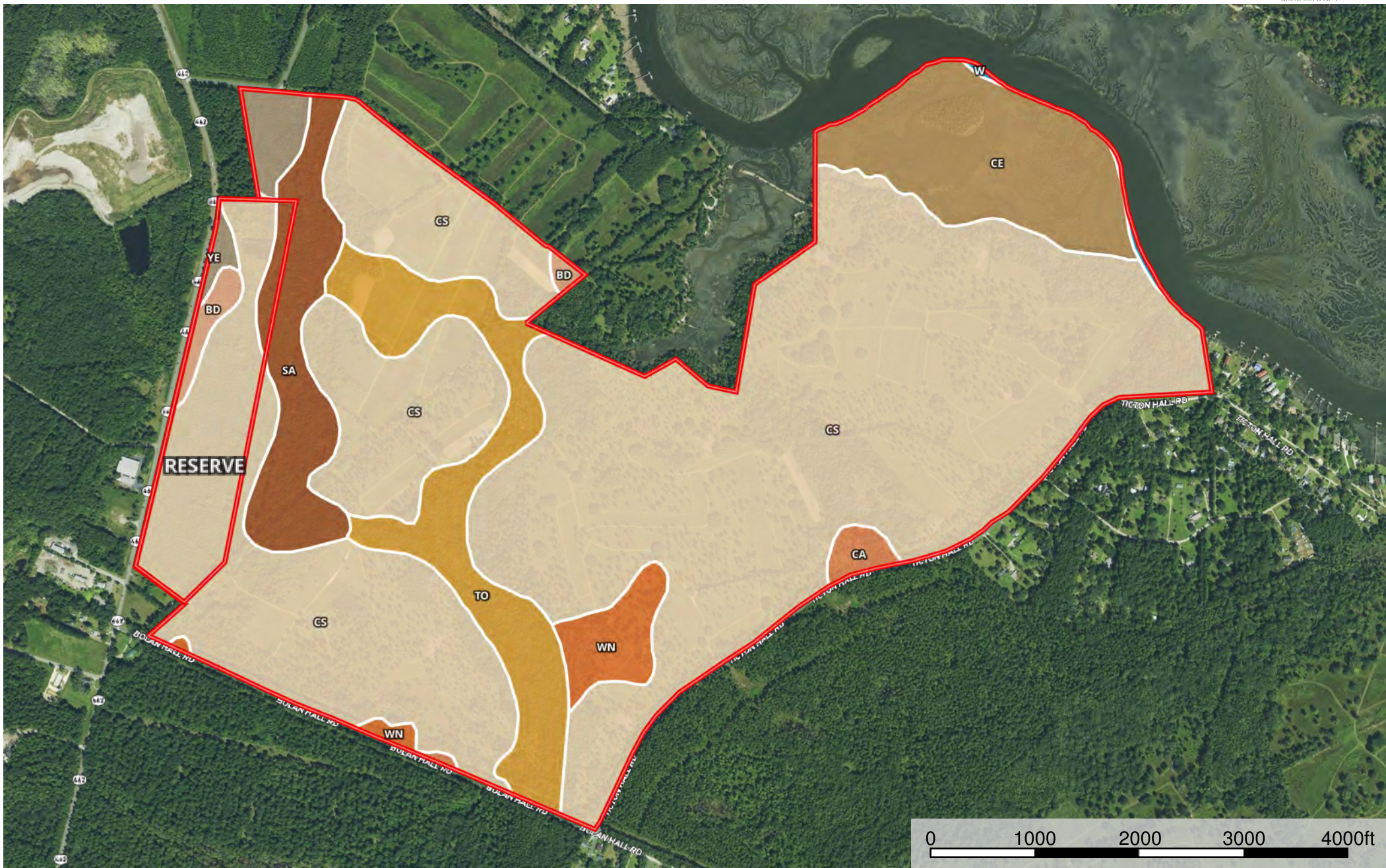



Ticton Hall West 3


Jasper County, South Carolina, 630.61 AC +/-




 Boundary

Disclaimer: all information provided is assumed accurate and correct but no assumptions of liability are intended. Neither the seller nor the agent of the seller represent the accuracy of the information provided in this prospectus or email including but not limited to the following: timber values, volumes, acreage discrepancies, timber age or marketability of timber. The seller or agent does not guarantee the condition or square footage of any improvements would constitute or the function of machinery, wells, septic systems or water control devices. This offering is subject to errors and omissions as well as changes including price or withdrawal without notice.

Todd Crosby
P: 8437825700 Toddcrosby@crosbylandco.com 300 Carn St.

 The information contained herein was obtained from sources deemed to be reliable. MapRight Services makes no warranties or guarantees as to the completeness or accuracy thereof.

|  678.8 ac

SOIL CODE	SOIL DESCRIPTION	ACRES	%	CAP
CE	Capers association	54.1	7.97	8w
Wn	Williman loamy fine sand	14.9	2.19	3w
Cs	Coosaw loamy fine sand	493.8	72.74	3w
To	Tomotley loamy fine sand	56.3	8.3	3w
Sa	Santee fine sandy loam	38.3	5.65	3w
Ye	Yemassee loamy fine sand	10.0	1.47	2w
Bd	Bladen fine sandy loam	5.5	0.8	3w
Ca	Cape Fear loam	4.6	0.68	3w
W	Water	1.3	0.19	-
TOTALS		678.8	100%	3.38